



Materials & Finishes

FBD Studio Collection 2023



Value and sustainability informs everything we do. From the local materials we source to the way we design our furniture, through to manufacture and delivery.





Furniture by Design Design Studio



At Furniture by Design we work with a selection of material elements to design and manufacture furniture that connects all the finishes for a considered and cohesive product. We use steel, timber, textiles, cork, laminates, veneers, stone, glass, linoleum. We especially focus on recycled, recyclable and sustainable materials locally manufactured to ensure low carbon miles where ever possible.

The palette of colours and finishes of our standard house range selected by our local FBD Studio working with Karie Soehardi, textile designer, colourist and sustainability consultant, looks beyond our borders for

global inspiration viewed through Australian context of our wonderful southern light, coastal hues and the reds and browns of our distinctive out back land scapes.

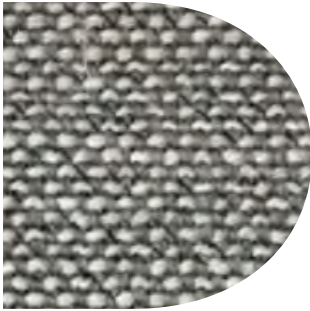
The 2023 collection offers finishes and textures that are not only for the now but for future enjoyment and relevance. Our products are made to last a minimum of 10 years and the finishes offered are for creating products that can out live short term trends.

We provide designers with a palette of sustainable material and finish options to create products that can stand the test of time and provide a life time of its designed purpose in its selected space.

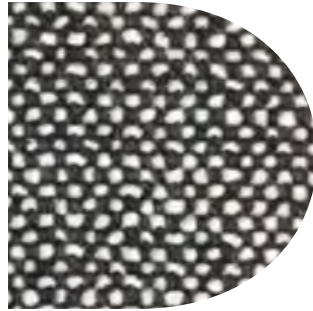


Fabric Group 1—Chilton

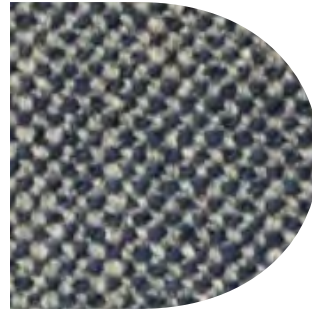
Product	Chiltern
Composition	82% Polyester / 16% Acrylic / 2% Wool
Pattern Repeat	Nil Repeat
Width	140.0cm
Weight	650.0g/m
Origin	Asia
Rub Tests	40,000 Martindale Cycles
Attributes	Multi Directional



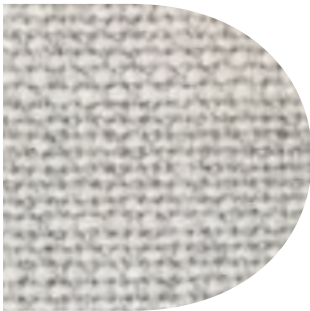
Steel



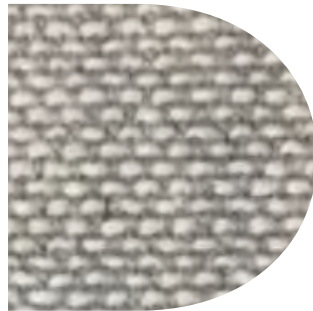
Salt & Pepper



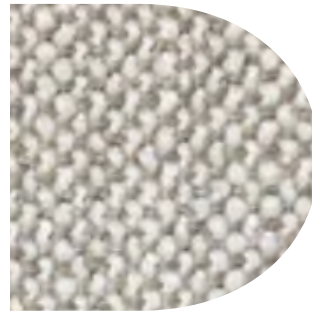
Storm



Snow



Platinum

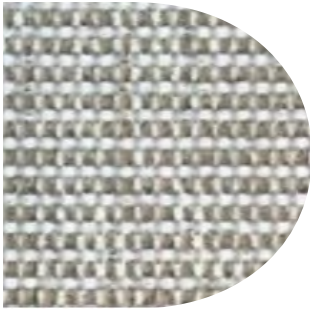


Sandstone

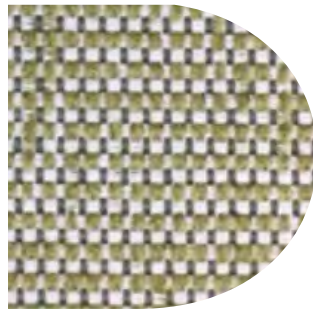


Fabric Group 1—Runner

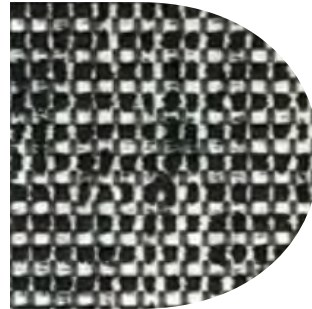
Product	Runner
Composition	85% Polyester / 15% Acrylic
Pattern Repeat	Nil Repeat
Width	137.0cm
Weight	680.0g/m
Origin	Australia
Rub Tests	40,000 Martindale Cycles
Attributes	Multi Directional



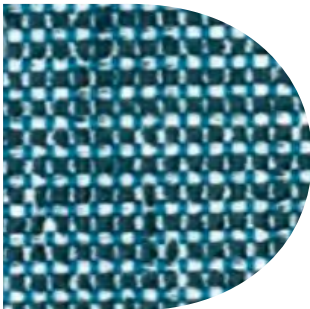
Turquoise



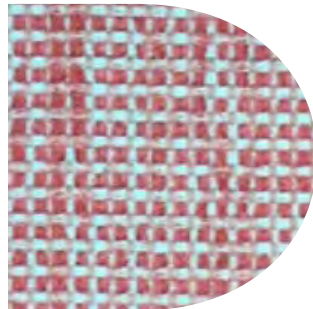
Coral



Coral



Olive

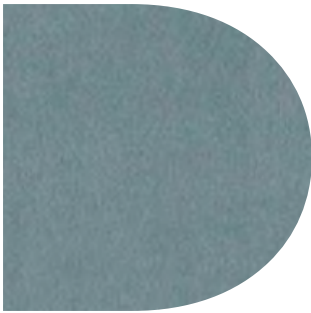


Charcoal



Fabric Group 1—Plush

Product	Plush—Velvet by Warwick
Composition	100% Polyester
Pattern Repeat	Nil Repeat
Width	140.0cm
Weight	320.0g/m
Origin	Asia
Rub Tests	40,000 Martindale Cycles
Attributes	Multi Directional
Range	45 colours in the full range



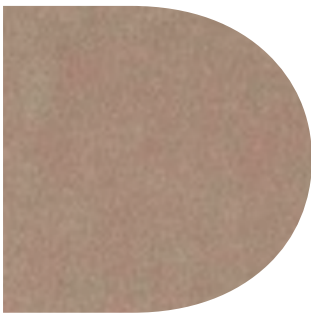
Airforce



Forest



Mole



Platinum



Turmeric

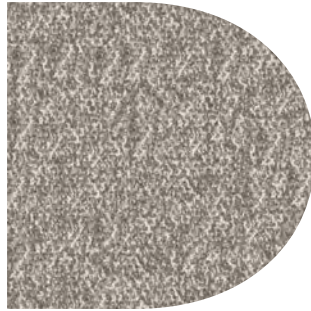


Fabric Group 1—Atmosphere

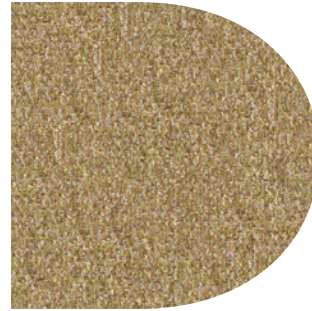
Product	Atmosphere by James Dunlop
Composition	100% PL (PES)
Pattern Repeat	Nil Repeat
Width	140.0cm
Weight	700.0g/m
Origin	Asia
Rub Tests	40,000 Martindale Cycles
Attributes	Multi Directional, Fire Retardant, Eco/Green, Fireguard
Light Fastness	UV 6/8 Blue Scale
Range	9 colours in the full range



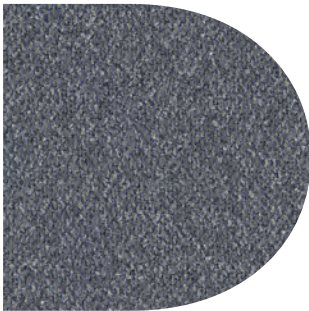
Natural



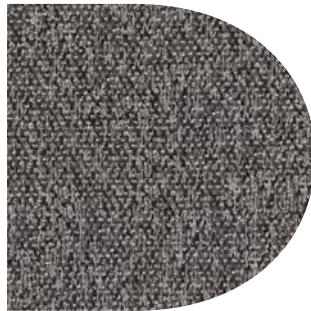
Stone



Turmeric



Petrol

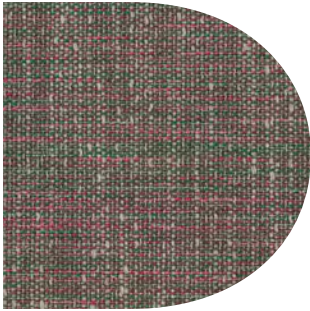


Foundry

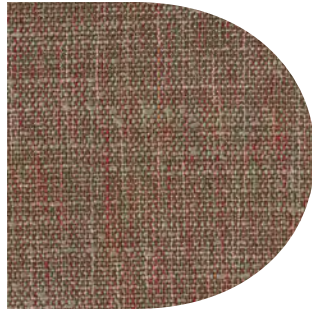


Fabric Group 2—Zion

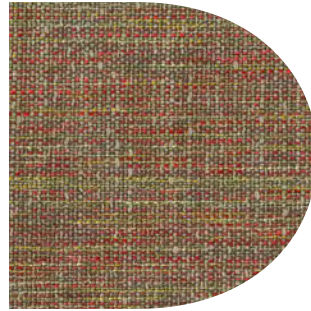
Product	Zion by Warwick
Composition	57% Acrylic/43% Polyester
Pattern Repeat	Nil Repeat
Width	140.0cm
Weight	492.0g/m
Origin	Asia
Rub Tests	40,000 Martindale Cycles
Attributes	Multi Directional, Oekotex 100
Light Fastness	UV 6/8 Blue Scale
Range	20 colours in the full range



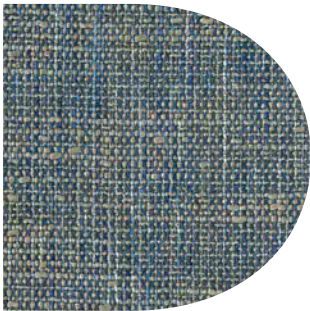
Orchid



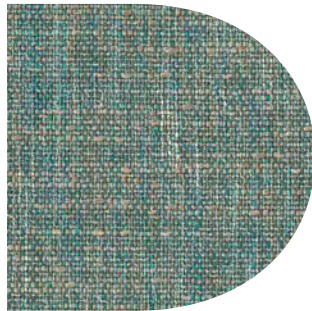
Mulberry



Spice



Marine



Atoll

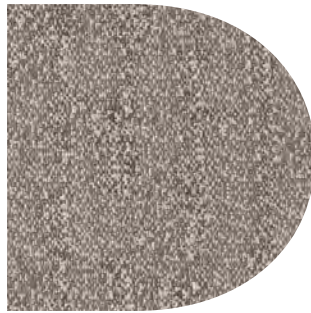


Fabric Group 2—Octavia

Product	Octavia by Zepel
Composition	61% PC/39% Polyester
Pattern Repeat	Nil Repeat
Width	141.0cm
Weight	682.4g/m
Origin	Turkey
Rub Tests	190,000 Wyzenbeek Double Rubs / 40,000 Martindale Cycles
Attributes	Multi Directional, Stain Resistant, Eco/Green, Fireguard, Oekotex 100
Light Fastness	UV 6/8 Blue Scale
Range	36 colours in the full range



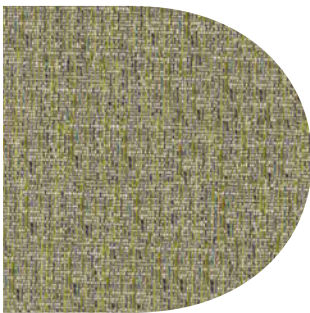
Fog



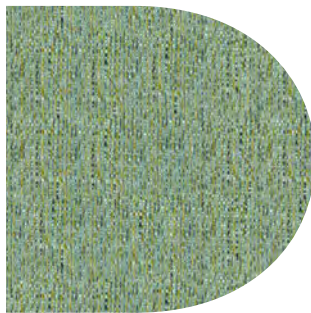
Stone



Mulberry



Lime

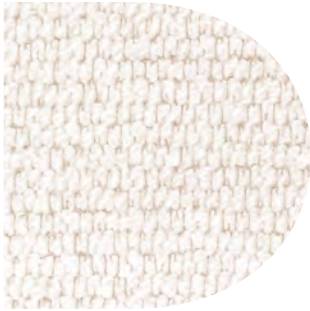


Lagoon



Fabric Group 2—Miller

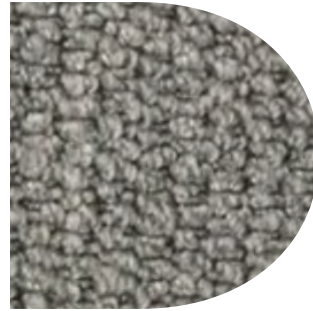
Product	Miller
Composition	85% Polyester/15% Acrylic
Pattern Repeat	Nil Repeat
Width	140.0cm
Weight	680.0g/m
Origin	Asia
Rub Tests	40,000 Martindale Cycles
Attributes	Multi Directional



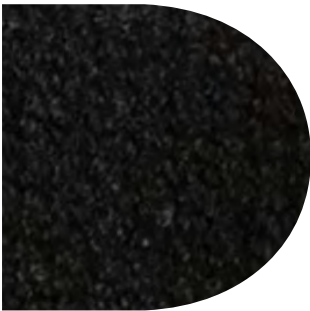
Stone



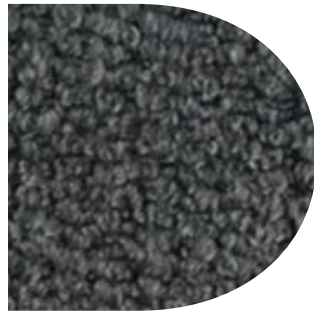
Bark



Grey



Charcoal



Smoke



Fabric Group 2—Mingle Mangle

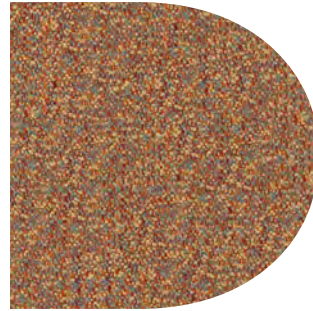
Product	Miller
Composition	100% Polyester
Pattern Repeat	Nil Repeat
Width	138.0cm
Weight	683.1g/m
Origin	India
Rub Tests	100,000 Martindale Cycles
Attributes	Multi Directional, Eco/Green, Fireguard, Oekotex 100, Stain Resistant
Range	25 colours in the full range



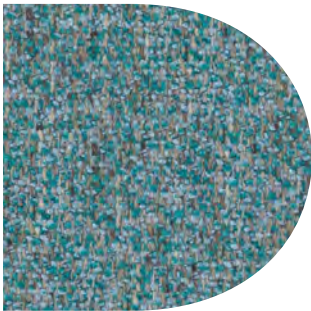
Chutney



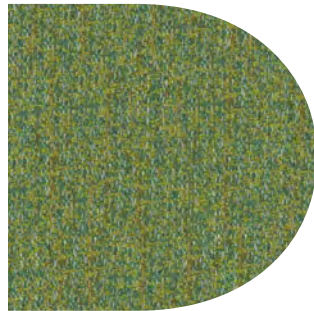
Flax



Spice



Cascade



Turtle

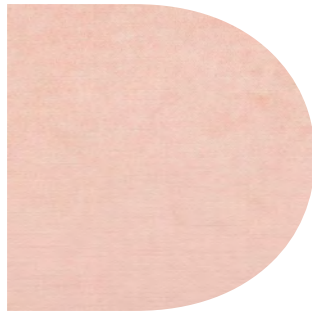


Fabric Group 2—Chateau James Dunlop

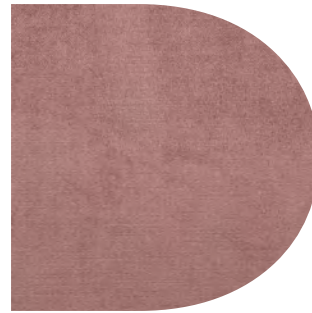
Product	Chateau
Composition	100% PL (PES)
Pattern Repeat	Nil Repeat
Width	140.0cm
Weight	546.0g/m
Origin	Turkey
Rub Tests	40,000 Martindale Cycles
Attributes	Multi Directional, Fire Retardant
Light Fastness	UV 4-5/8 Blue Scale
Range	34 colours in the full range



Moonstone



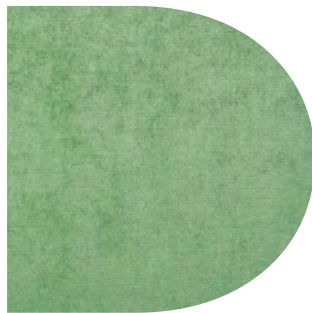
Ballet



Nostalgia



Amazon

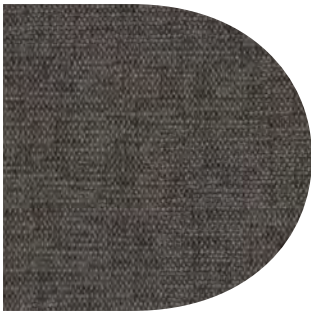


Laurel

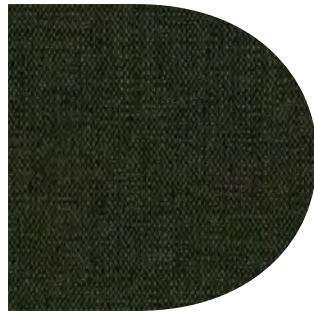


Fabric Group 3—Tahiti

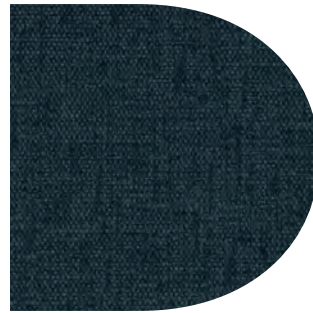
Product	Tahiti by Mokum
Composition	100% PL (PES)
Pattern Repeat	Nil Repeat
Width	139.0cm
Weight	631.1g/m
Origin	India
Rub Tests	100,000 Wyzenbeek Double Rubs / 100,000 Martindale Cycles
Attributes	Multi Directional, Fire Retardant, Stain Resistant, Fireguard
Range	46 colours in the full range



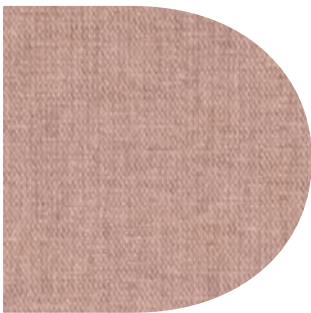
Pewter



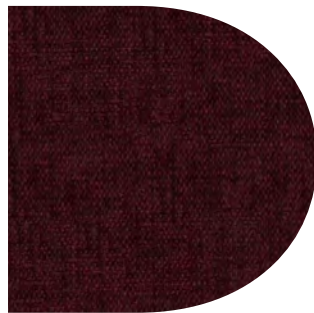
Moss



Petrol



Blush

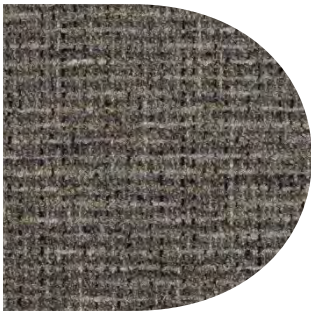


Bordeaux



Fabric Group 3—Wanaka

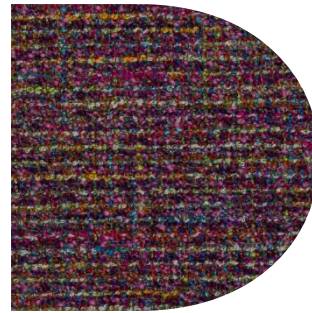
Product	Wanaka by Charles Parsons
Composition	80% Polyester/20% Viscose
Pattern Repeat	Nil Repeat
Width	140.0cm
Weight	611.1g/m
Origin	India
Rub Tests	100,000 Martindale Cycles
Light Fastness	UV 6/8 Blue Scale
Attributes	Multi Directional, Dry Cleanable



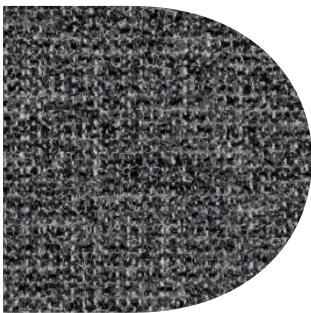
Mule



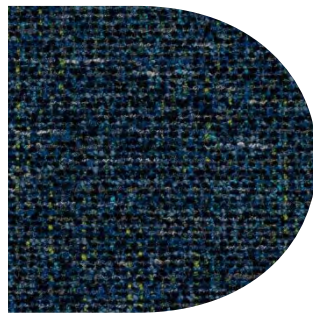
Coral



Confetti



Mineral Stone



Atlas

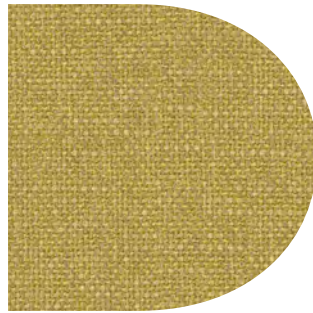


Fabric Group 4—Rocco

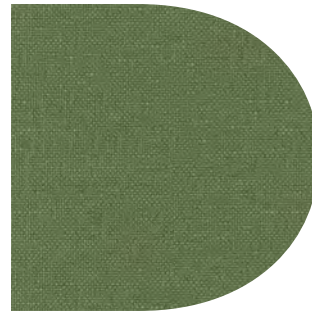
Product	Rocco by Zepel
Composition	82% Polyester/18% Acrylic
Pattern Repeat	Nil Repeat
Width	138.0cm
Weight	650.0g/m
Origin	Asia
Rub Tests	30,000 Martindale Cycles
Attributes	Multi Directional, Eco/Green, Fireguard
Range	46 colours in the full range



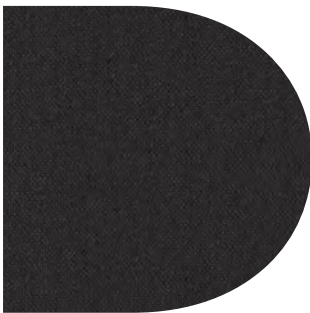
Flax



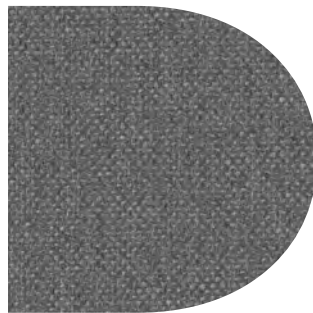
Linden



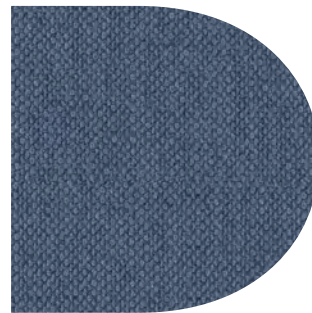
Bottle



Onyx



Penguin



Marine



Fabric Group 4—Augustus

Product	Augustus by Warwick
Composition	70% Recycled Wool / 25% Polyamide / 5% Acrylic
Pattern Repeat	Nil Repeat
Width	150.0cm
Weight	392.0g/m
Origin	Europe
Rub Tests	150,000 Martindale Cycles
Light Fastness	UV 6/8 Blue Scale
Attributes	Multi Directional, Eco/Green
Range	48 colours in the full range



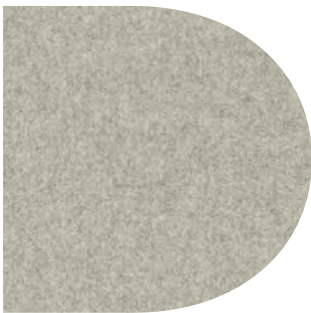
Mustard



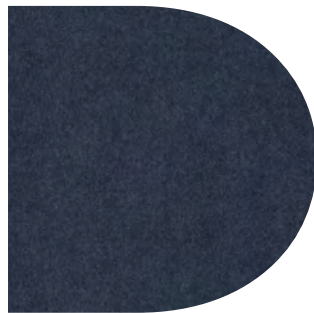
Marmalade



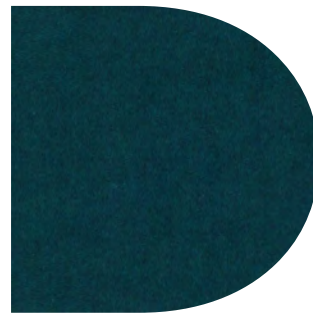
Ladybird



Zinc



Ink



Lagoon



Fabric Group 4—Boucle

Product	Boucle
Composition	53% Polyester/42% Wool/5% Nylon
Pattern Repeat	Nil Repeat
Width	140.0cm
Weight	600.0g/m
Origin	Australia
Rub Tests	40,000 Martindale Cycles
Light Fastness	UV 6/8 Blue Scale
Attributes	Multi Directional



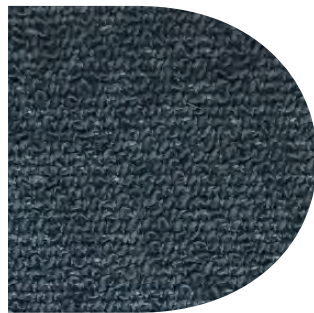
Poison Berry



Redback



Blackheath

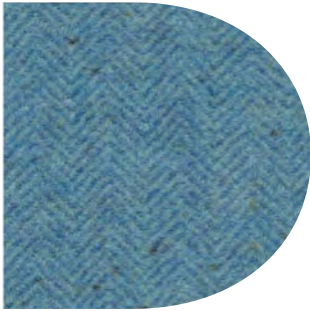


Greystorm



Fabric Group 5—Herringbone

Product	Herringbone by Instyle
Composition	98% Wool/2% Nylon
Pattern Repeat	H 2.2cm V 1.1cm
Width	137.0cm
Weight	400.0g/m
Origin	Australia
Rub Tests	35,000 Wyzenbeek Double Rubs / 40,000 Martindale Cycles
Light Fastness	UV 5/8 Blue Scale
Attributes	Flame Retardant, Eco/Green
Range	15 colours in the full range



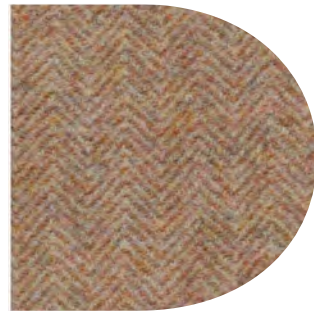
Croft



Isle



Hebrides

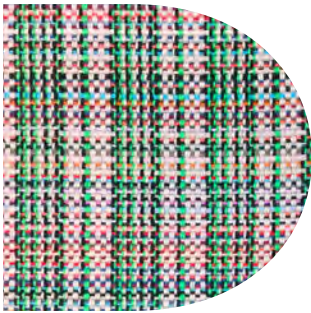


Revival



Fabric Group 5—Remix

Product	Remix
Composition	98% Wool/2% Nylon
Pattern Repeat	
Width	140.0cm
Weight	610.0g/m
Origin	Australia
Rub Tests	Martindale Cycles
Light Fastness	UV 5/8 Blue Scale
Attributes	Flame Retardant, Eco/Green



Remix 1



Remix 2



Fabric Group 5—Multicheck

Product	Multicheck
Composition	98% Wool/2% Nylon
Pattern Repeat	
Width	140.0cm
Weight	610.0g/m
Origin	Australia
Rub Tests	Martindale Cycles
Light Fastness	UV 5/8 Blue Scale
Attributes	Flame Retardant, Eco/Green



Multicheck 1



Multicheck 2



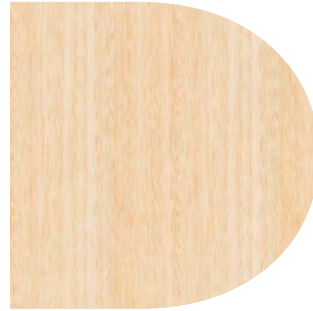
Solid Timber & Veneer



European Beech



American Oak



Victorian Ash



Tasmanian Oak

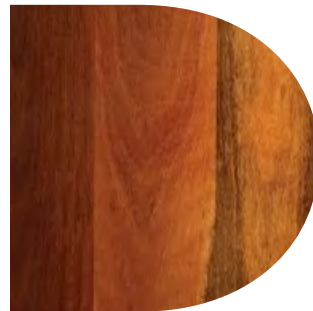
Indigenous Solid Timber



Red Tulip Oak



Queensland Silver Bark



Darwin Stringy Bark



Timber finishes American Oak



Natural



Wenge



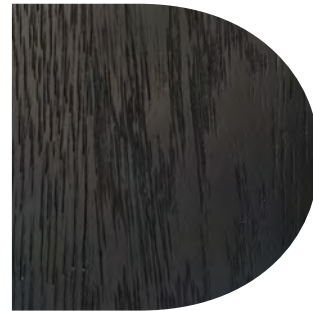
Whitewash



Black Japan



Brown Japan



Black

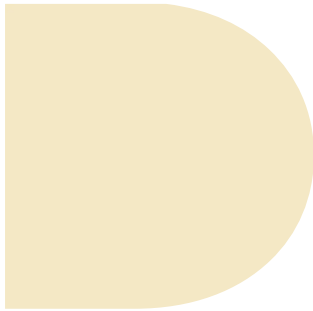
Furniture by Design uses 10% gloss level. Other gloss levels are available on request. We offer any timber stain or paint finish on request.

Please Note

Due to variance in timber grain and difference in timber species timber finishes will vary from images shown. Sample pieces can be ordered for colour boards and sample approval.



Linoleum by Forbo



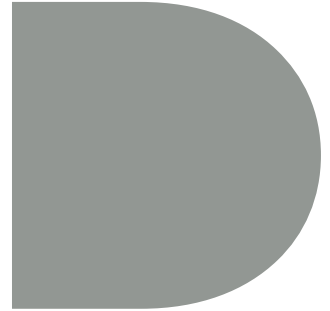
4157 Pearl



4176 Mushroom



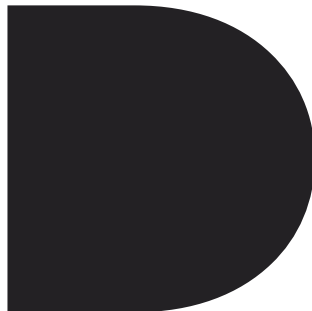
4177 Vapour



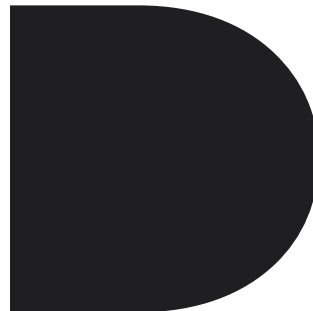
4132 Ash



4155 Pewter



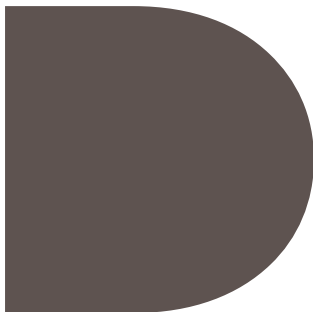
4166 Charcoal



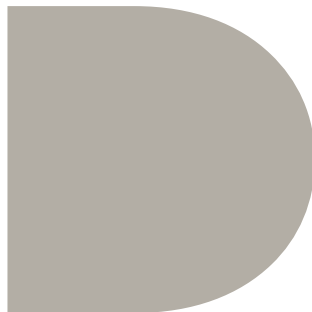
4023 Nero



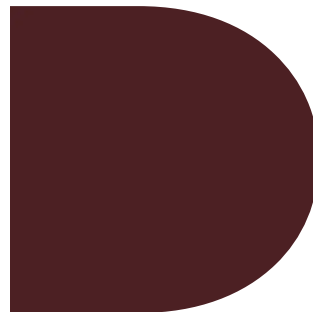
4178 Iron



4172 Mauve



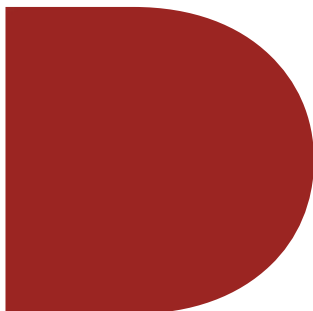
4175 Pebble



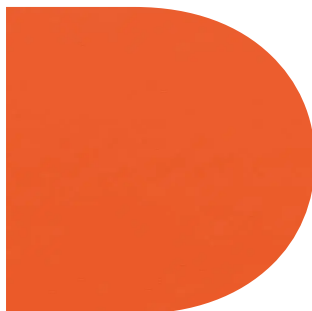
4154 Burgundy



4185 Powder



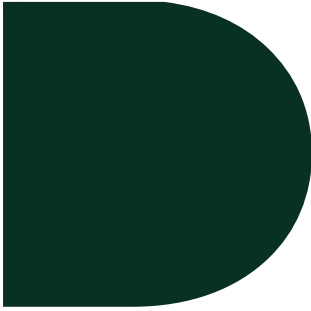
4164 Salsa



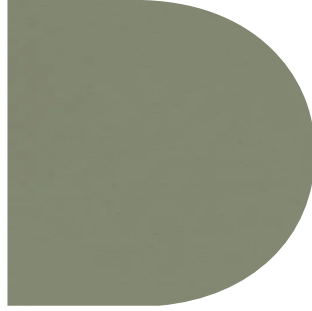
4186 Orange Blast



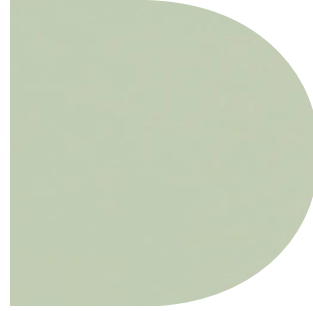
Linoleum by Forbo



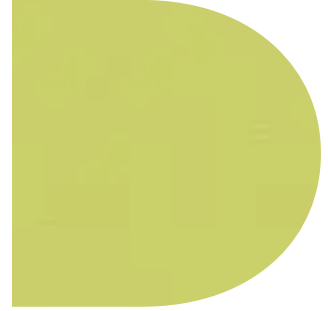
4174 Conifer



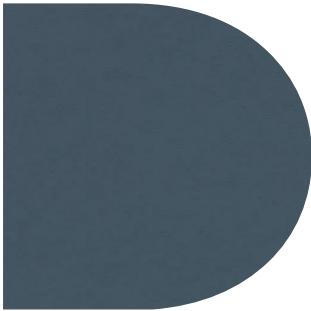
4184 Olive



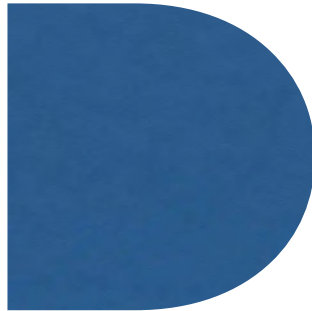
4183 Pistachio



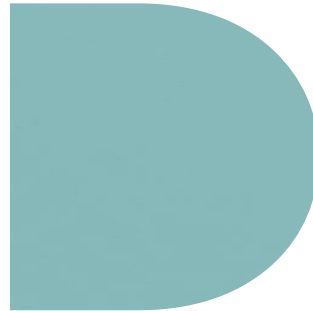
4182 Spring Green



4179 Smokey Blue



4181 Midnight Blue



4180 Aquavert

Please Note

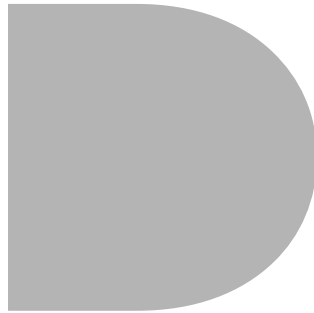
We recommend furniture linoleum to be laid up on Plywood with exposed and finished edge.



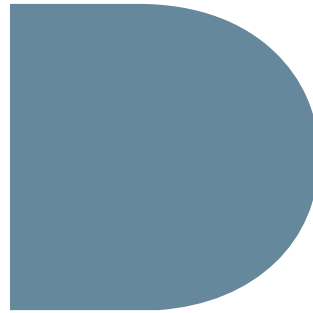
Powdercoat



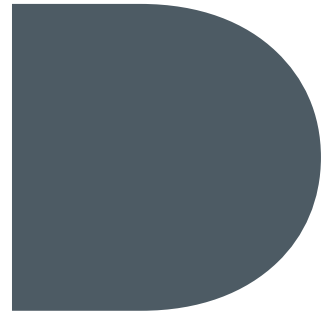
White Satin



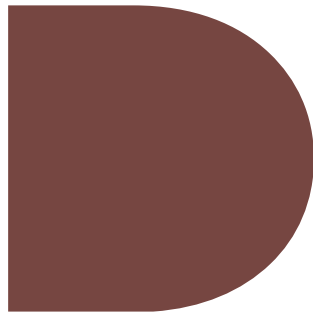
APO Grey Satin



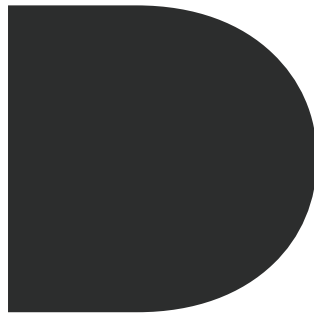
Wedgewood Satin



Deep Ocean Matt



Manor Red Matt



Black Satin



Electro Medium
Bronze Flat



Electro Fresh
Gold Flat

Please Note

We offer Dulux and Interpon powdercoat full commercial range.



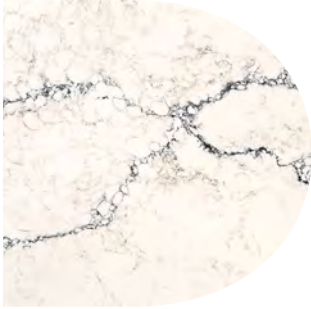
Laminate

We offer the standard commercial range from Laminex and Polytec.





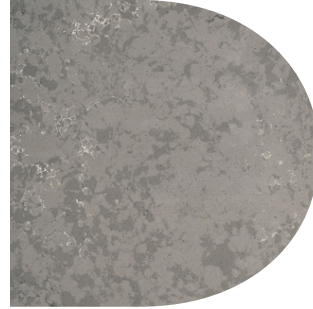
Man Made Stone— Quattro Stone



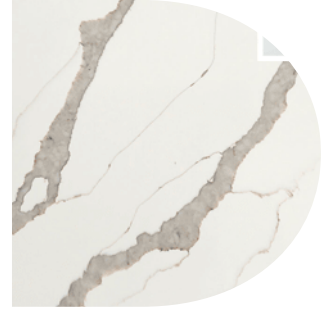
Keiser White



Crisp Matt



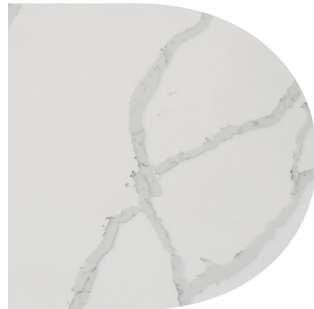
Fossil Polish



Calacatta Wow



Calacatta Mistico



Calacatta Classico



Calacatta Gold



Dante



Salt



White Dust



Licorice



Nero Marquina

21 Finishes in total range.



FURNITURE
BY
DESIGN®



Factory

Unit 5, 86 Gow Street
Padstow NSW 2011
T + 61 2 9793 7663

Sydney Studio

GF/79 Myrtle Street
Chippendale NSW 2008
By Appointment

commercial@furniturebydesign.com.au
FURNITUREBYDESIGN.COM.AU